



LOS ANGELES COLLEGE OF MUSIC

Accepted Student Day

Friday April, 16 - 5 PM Pacific Time

LOGIN

Opening Session:

Please use the Zoom links on the following page to access waiting rooms for Accepted Student Day. Separate links will be provided for the Opening Session and Program Session Rooms.

5:00 PM

Welcome

Introducing LACM Leadership & Admissions Team



5:10 PM

Student Performance

Kennedy Ray
Songwriting Major



5:25PM

Resource Fair

Learn More About
Student & Career Services, FinAid, Campus Highlights

5:50 PM

Keynote Speaker

Phil Swann - Songwriting Faculty



6:15 PM

Student Mingle

Meet current and future LACM Students

6:15 PM

Parent and Leadership Q & A

Meet LACM leadership and get your questions answered

7:00 PM

Program Sessions

Zoom links are provided on the following page.

Bass Performance

Brass & Woodwind Performance

Drum Performance

Guitar Performance

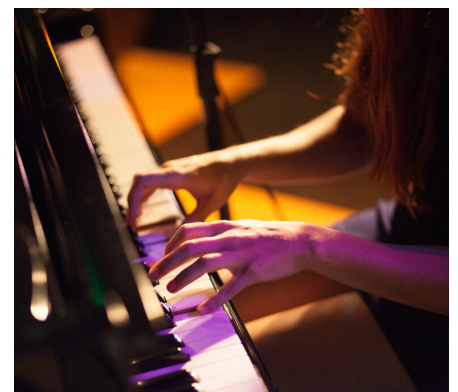
Piano Performance

Vocal Performance

Music Producing & Recording

Composing for Visual Media

Music Business & Songwriting





ZOOM LINKS AND PASSCODES

Virtual Accepted Student Day

Opening Session: 5:00 PM Student Mingle: 6:15 PM

<https://lacm.zoom.us/j/95569139345?pwd=NkxDcSsrRnZ1b0NSdHNuVjc1UEphUT09>

Meeting ID: 955 6913 9345 Passcode: ASD

Parent and Leadership Q&A: 6:15 PM

<https://lacm.zoom.us/j/91315309200?pwd=SHV3aW9sL0hPVVh2RnlzTIRMdzNPZz09>

Meeting ID: 913 1530 9200 Passcode: ASD

Bass Program Session: 7:00 PM

<https://lacm.zoom.us/j/92328070737?pwd=T2pIT1pwQTUvWk13aXpEUE9jWUdOUT09>

Meeting ID: 923 2807 0737 Passcode: BASS

Brass & Woodwind Program Session: 7:00 PM

<https://lacm.zoom.us/j/93220219446?pwd=VVhpRHh2dEh1UIU2dDM5ZXdlK3E2Zz09>

Meeting ID: 932 2021 9446 Passcode: BWW

Drum Program Session: 7:00 PM

<https://lacm.zoom.us/j/95990842385?pwd=UkFLaDcweGxISi8wTzFQYmpoeURUUT09>

Meeting ID: 982 9207 4406 Passcode: DRUM

Guitar Program Session: 7:00 PM

<https://lacm.zoom.us/j/94750082569?pwd=MVdpbGo5ZXlSL2NQeWdGUzYva21Zdz09>

Meeting ID: 959 9084 2385 Passcode: GUITAR

Piano Program Session: 7:00 PM

<https://lacm.zoom.us/j/94889676519?pwd=UVdwL21YOXVHbk5SWkhlaFdKREpFZz09>

Meeting ID: 948 8967 6519 Passcode: PIANO

Vocal Program Session: 7:00 PM

<https://lacm.zoom.us/j/98234654091?pwd=UER2ZzFWUGU5akFQOFJKkdOZEEdndz09>

Meeting ID: 982 3465 4091 Passcode: VOCAL

Music Producing and Recording Program Session: 7:00 PM

<https://lacm.zoom.us/j/96353494292?pwd=MzdlUlJpMmEzQXBTTGE0M0tMeXhQZz09>

Meeting ID: 963 5349 4292 Passcode: MPR

Composing for Visual Media Program Session: 7:00 PM

<https://lacm.zoom.us/j/99224860490?pwd=UC8rVnJBnZzZ2FxnJBJa1dsdWVXUT09>

Meeting ID: 992 2486 0490 Passcode: CVM

Songwriting and Music Business Program Session: 7:00 PM

<https://lacm.zoom.us/j/97071515922?pwd=eFVUa1BKbnlzV2wzUIA0aE0wdWlxUT09>

Meeting ID: 970 7151 5922 Passcode: MBSW

KENNEDY RAY

SONGWRITING MAJOR



Born in Memphis, Tennessee, Kennedy Ray began singing before she could talk. She was then immersed in music as a toddler, curating her love for all things performing arts. She began songwriting at Stax Music Academy, and affiliation of the 20th-century household label, Stax Records.

Her style can be described as pop/r&b, with a mixture of soulful and alternative style singing. She is currently attending Los Angeles College of Music, where she plans to continue her songwriting work and release music soon.

FOLLOW KENNEDY RAY



@kennedycray



@kennedycray



@kennedyray__



PHIL SWANN

SONGWRITING FACULTY

Known by LACM students for instructing classes like History of Song, Writing for Music Row and Advanced Songwriting, Phil transmits over 30 years on industry expertise to his students.

His songs have been heard in television, film and have been recorded by numerous recording artists including: Lee Ann Womack, Josh Strickland, and Blake Shelton (just to name a few). Phil is also an acclaimed playwright and a former staff songwriter and producer for DreamWorks.

DEPARTMENT HEADS



BASS Jerry Watts

Jerry Watts, Jr. has an extensive list of recording credits, having appeared on hundreds of CDs, numerous film & TV soundtracks, as well as commercials, film trailers, and instructional DVDs. Jerry has a wealth of international touring experience, representing a broad spectrum of artists at the highest levels of rock, pop, jazz, and “world” music.



PIANO Lisa Harriton

Formally trained at London's prestigious Royal School of Music and later at USC, Lisa Harriton is a Grammy and Oscar Nominated songwriter, producer, keyboardist and sound designer with deep roots in the Los Angeles music scene. Lisa has toured/performed with The Smashing Pumpkins, Ed Sheeran, Tal Wilkenfeld, Kesha, Adam Lambert, Joe Labarbera, Darek Oles, Ernie Watts, Ingrid Jensen & Larry Koonse.



BRASS & WOODWINDS Bryan Lipps

Trumpeter, writer and educator Bryan Lipps is on a mission to play, create, and share as much music as physics will allow. From his time in the Joe LaBarbara quintet to his tenure as international touring soloist for multi Grammy recording artists Michael Buble and John Mayer, he has been featured on nearly every continent, every major entertainment TV show, and every major jazz festival in the world.



VOCAL David Joyce

David Joyce is a singer/keyboard player/songwriter who has worked with the likes of Chris Isaak, U2, Oasis, Natalie Cole & many more. He has played & sung on many television shows & films including, Saved by the Bell, Days of Our Lives, The Tonight Show, I Am Legend & King Kong. David has produced a number of artists in LA & has scored PBS documentaries & AFI films. In 1986, David was a Grammy Award winner for Best Jazz Vocal Group with Clare Fischer's 2 + 2 Plus.



DRUMS Ralph Humphrey

Ralph Humphrey is one of Los Angeles' most demanded studio drummers, recording for TV, motion pictures, albums and jingles. His most recent projects include Dancing with the Stars, American Idol, and Star Trek Enterprise. His past touring and recording experience includes the Don Ellis Big Band, Frank Zappa and the Mothers of Invention, among many others.



GUITAR Molly Miller

A Los Angeles native, Molly Miller has performed, toured, and recorded with the likes of Jason Mraz, Wynton Marsalis, Ashley Clark, Bushwalla, Kenton Chen (The Sing Off), and Morgan Karr (Spring Awakening). She grew up playing guitar on stage in a band with her four siblings, performing on national television, and winning music awards all around the country.



COMPOSING FOR VISUAL MEDIA Mark Cross

Mark Cross is an award winning Producer, Composer, Mixer, Educator and Author with an extensive discography in both film and television that spans over 2 decades. As an Engineer / Mixer Mark has worked on numerous albums, film scores, and television episodes, including “I Am Shelby Lynne”, “CARS” and “Meet the Parents”. As a composer he has created original music for Last Comic Standing, American Idol, Curb Your Enthusiasm and many others.



MUSIC PRODUCING & RECORDING André Knecht

André Knecht's professional background includes a 7-year stint as a Sound Designer, Recording Engineer, Music Supervisor and composer with the Swiss Broadcasting Company (SSR), where he also hosted both radio and TV shows. In 1983 he moved to California where he began a twin-track career in audio engineering and marketing at Warner Bros. Records. Today, he is active as a freelance engineer and producer, as well as a consultant & instructor.



MUSIC BUSINESS & SONGWRITING Erin Workman

With over 15 years of experience in the music industry, Erin Workman brings a combined expertise in areas of Music Publishing, A&R, Artist Development, Vocal Coaching, Entertainment Education, Industry Relations and more. A degree in Music Education and Vocal Performance prepared her to enter into the industry as a signed staff songwriter and recording artist for Gaylord Entertainment (including Acuff Rose and Warner Chappell) in Nashville, TN, which led to entry into writing for Film/TV projects and various publishing/licensing ventures. While working with artists and songwriters, there was a natural ease into the field of Artist Development which brought Workman to Los Angeles to write for Disney. As a session singer/pianist and songwriter, Erin can be found on projects as varied as Rufus Wainwright, Russell Crowe – TOFOG, Disney's “Suite Life of Zack and Cody”, Nickelodeon's “Unfabulous” – Emma Roberts, and various Film and TV projects.



More questions? Ask...

ADMINISTRATION

Contact LACM

Business Hours: 8:30am - 5pm

626.568.8850

Admissions

admissions@lacm.edu

International Student Services

international@lacm.edu

Housing & Roommate Connection

housing@lacm.edu

Career Services

careercenter@lacm.edu

Academic Advising

advising@lacm.edu

Financial Aid

finaid@lacm.edu

Registrar

registrar@lacm.edu

Student Billing Services

billing@lacm.edu

FOLLOW LACM



[@LACMOfficial](https://www.instagram.com/LACMOfficial)



[@LACM](https://www.youtube.com/@LACM)



[@LACMOfficial](https://www.facebook.com/LACMOfficial)